

LUMINARIA VIAL

Innovadora solución de iluminación vial que combina diseño moderno con una buena disipación de calor y carcasa de alta eficacia luminosa.

Urulamp ofrece una amplia selección de accesorios para satisfacer las necesidades de nuevos proyectos de construcción, renovación de calles, autopistas, plazas, etc.

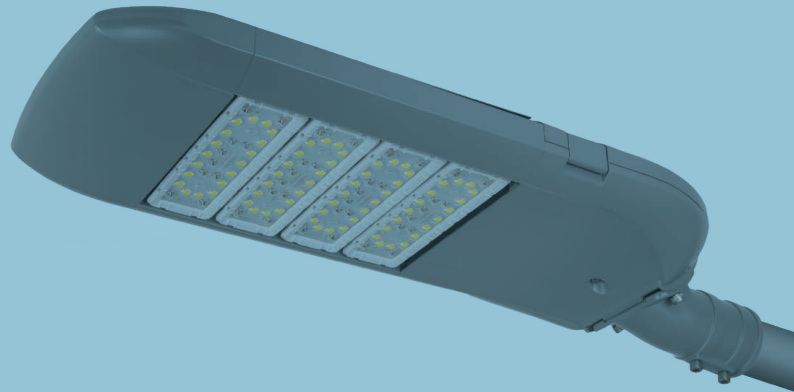
60W

120W

180W

240W

300W



SERIET19E

CARACTERÍSTICAS IMPORTANTES

- Ahorra hasta un 80% de energía.
- Tecnología modular y fácil mantenimiento.
- Grado de protección IP66.
- Disponible en colores blanco, gris y negro.
- Distribución de iluminación ergonómica.
- Vida útil de 50.000 hs.
- Garantía 5 años.

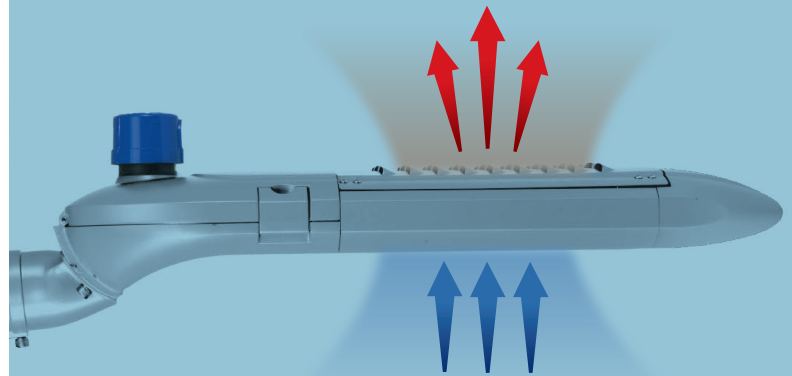
SERIE T19E



COLOR
DISPONIBLE

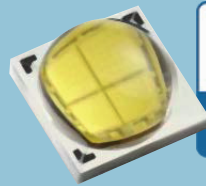
GRIS

VENTAJAS TÉCNICAS
ESPECIALES



EFECTO HONEYCOMB

Permite que el aire conveccione y pase completamente a través de los huecos entre módulos utilizando el efecto HONEYCOMB (panel), para así eliminar el calor rápidamente y reducir la temperatura a 20° C.



 **LUMILEDS**

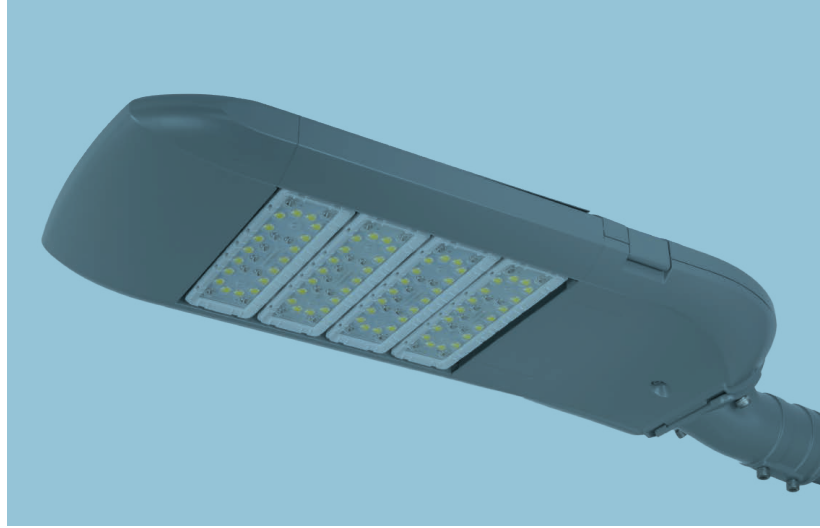
The Brighter Choice

CHIPS LED DE ALTA EFICACIA

Adopta la fuente de Lumileds LUXEON LED, optimizado para aplicaciones orientadas a la eficacia y de alta resistencia térmica. Testeado a temperaturas de funcionamiento reales para asegurar el máximo rendimiento.

FÁCIL MANTENIMIENTO

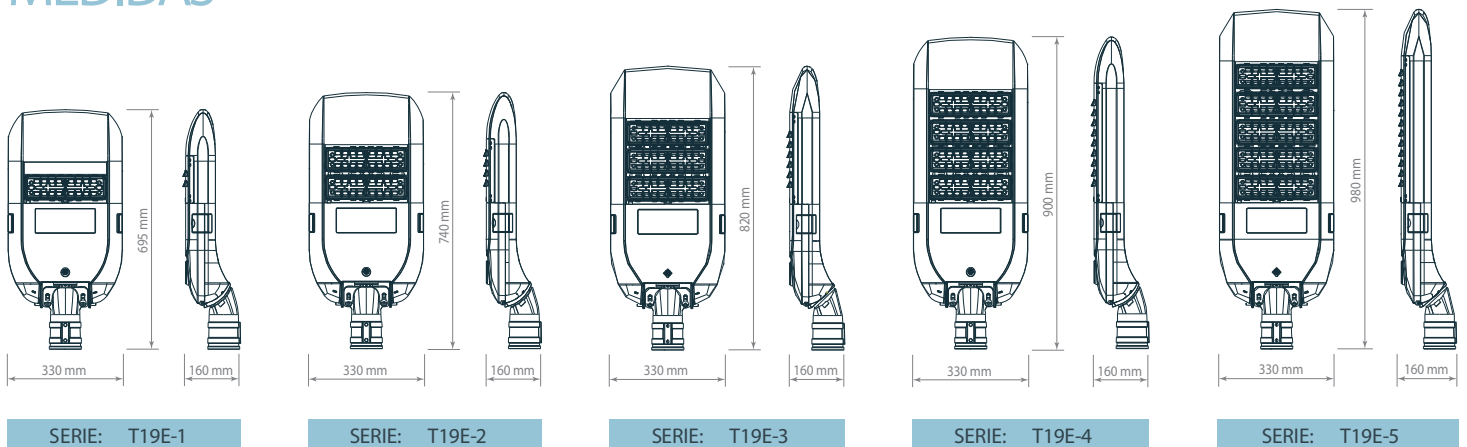
Utiliza un diseño estructural especial para lograr un desmontaje manual y simplificar la instalación de componentes sin el uso de herramientas, generando comodidad, rapidez y seguridad.



ESPECIFICACIONES TÉCNICAS

POTENCIA	60W	120W	180W	240W	300W
SERIE	T19E-1	T19E-2	T19E-3	T19E-4	T19E-5
CONSUMO	60W	120W	180W	240W	300W
VOLTAJE	100-277V~ 50/60 Hz				
CRI	≥ 70				
FACTOR DE POTENCIA	≥ 0.95				

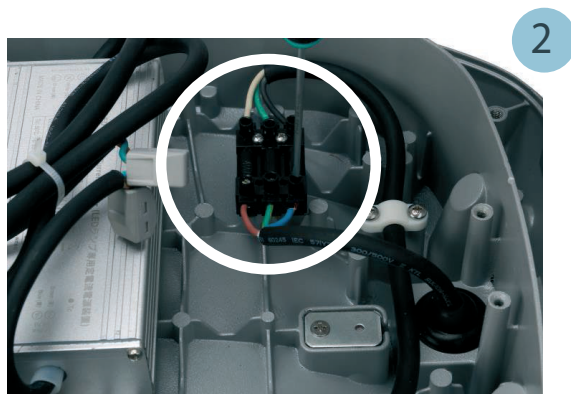
MEDIDAS



INSTALACIÓN



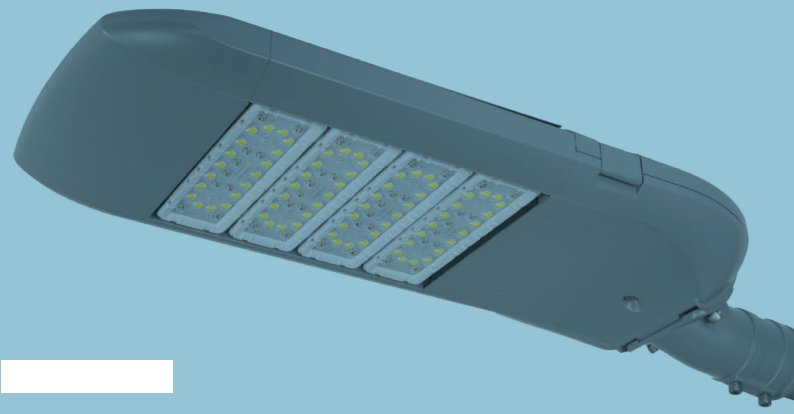
Paso 1: Tire y afloje los dos pestillos laterales. A continuación abra la tapa de la caja del driver.



Paso 2: Conecte los cables vivo, neutro y tierra a las terminales respectivas.



Paso 3: Cierre la tapa y trabe los pestillos laterales. Fije el accesorio en el poste. Apriete los dos tornillos hexagonales para fijar la luminaria.

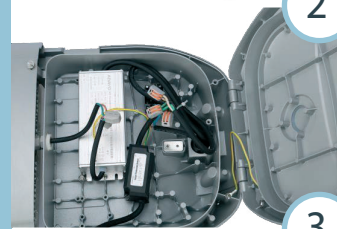


MANTENIMIENTO

DRIVER



1 Tire y afloje los dos pestillos laterales. A continuación abra la tapa de la caja del driver.



2 Desconecte el cable de entrada del bloque de terminales. Quite los tornillos en ambos extremos del controlador. Desconecte el cable de salida del conector.

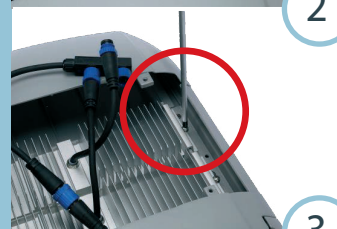


3 Cambie el driver, conecte y ajuste nuevamente los tornillos. Cierre la tapa y trabe los pestillos laterales.

MÓDULO



1 Desatornille ambos tornillos de la cubierta superior y abra la tapa.



2 Desconecte el módulo fallido del conector impermeable y desatornille ambos tornillos en los extremos del mismo.



3 Cambie el módulo, conecte y ajuste nuevamente los tornillos. Cierre la tapa y ajuste ambos tornillos de la parte superior.

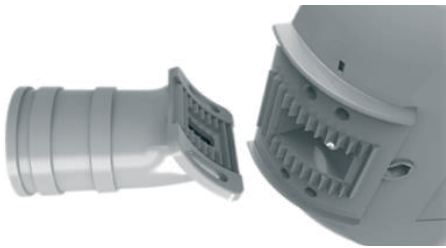


URU LAMP

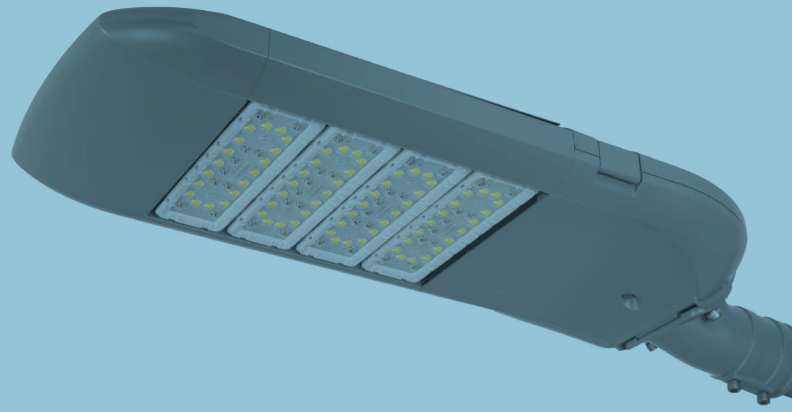
Iluminación con Tecnología LED

CARACTERÍSTICAS ESPECIALES

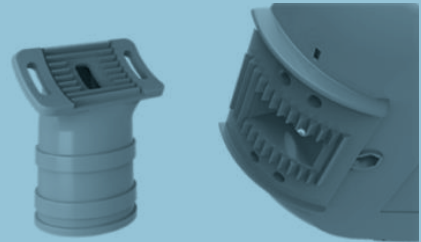
INSTALACIÓN HORIZONTAL



Adaptador de inclinación ajustable $\pm 15^\circ$
(5° para cada ajuste)



INSTALACIÓN VERTICAL

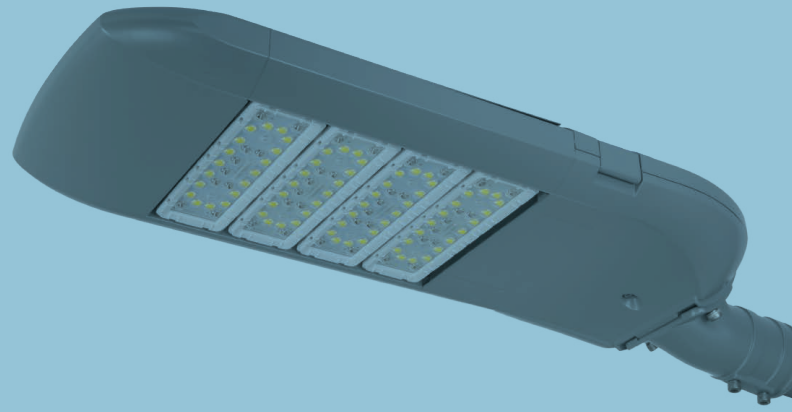


Adaptador de inclinación ajustable $\pm 15^\circ$
(5° para cada ajuste)



MÓDULOS LED

M1A

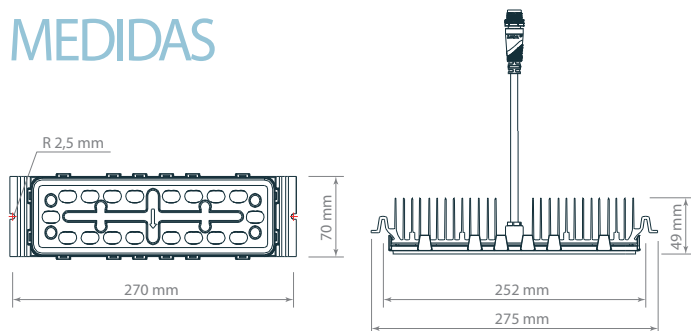


- Lumileds LUXEON LED de alta luminosidad.
- Grado de protección IP68.
- Larga Vida útil.
- Múltiples distribuciones de iluminación.

ESPECIFICACIONES TÉCNICAS

COLOR	POTENCIA	CORRIENTE	VOLTAJE	EFICIENCIA	F. LUMÍNICO	CRI	APERTURA
3000 K	60W	1050 mA	48-61 V	100 Lm/W	6000 Lm	≥ 70	Tipo I ~ Tipo V
4000 K							Luz Túnel
5000 K							25°
							40°
							60°
							110°

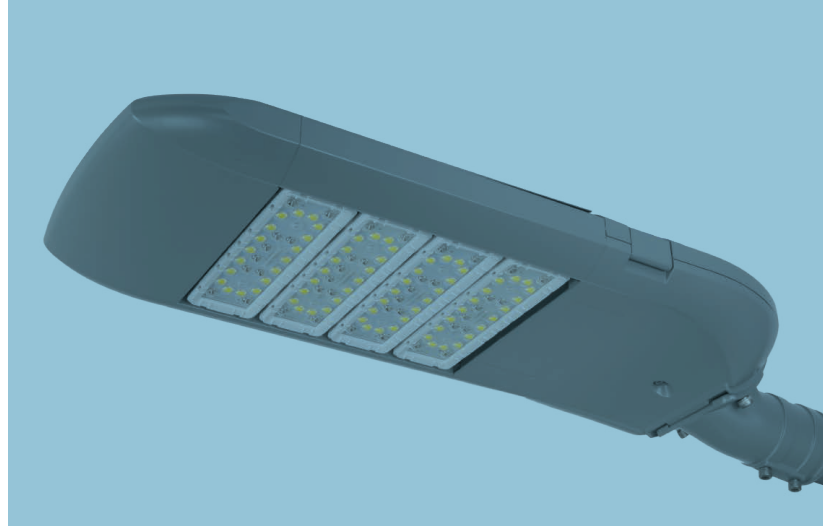
MEDIDAS



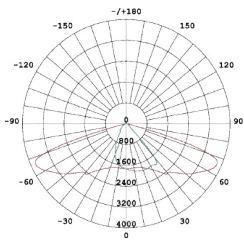
APLICACIONES

- Autopistas.
- Túneles
- Industrias.
- Plazas.
- Etc.

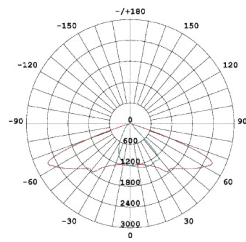




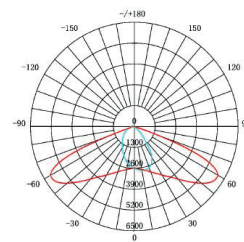
DISTRIBUCIÓN LUMÍNICA



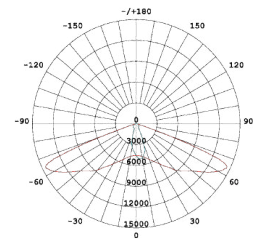
T1S1501 | IESNA Tipo I Corto



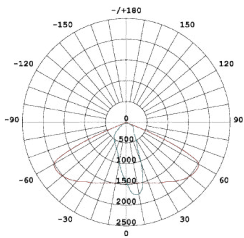
T1S1502 (Vertical) | IESNA Tipo I Corto



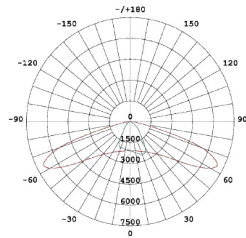
T1S1613 | IESNA Tipo I Corto



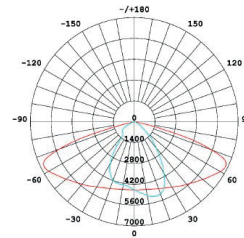
T1S1810 | IESNA Tipo I Corto



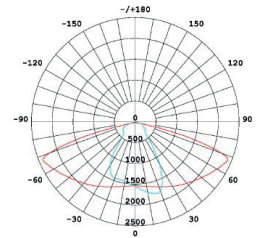
T1S1811 | IESNA Tipo I Corto



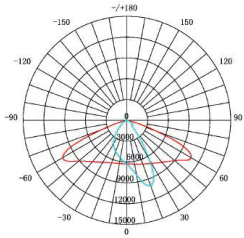
T1S3501 | IESNA Tipo I Corto



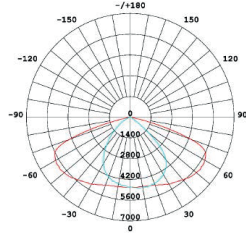
T1S3100 | IESNA Tipo I Corto



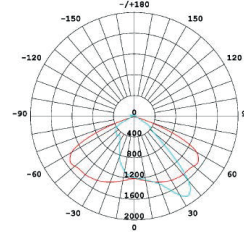
T1S3101 (Vertical) | IESNA Tipo I Corto



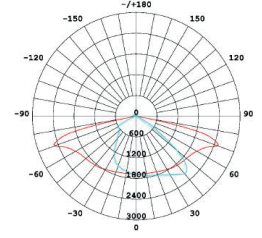
T1S3201 | IESNA Tipo I Corto



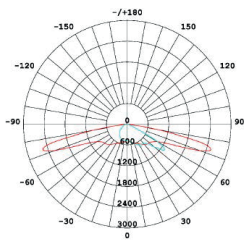
T2S1312 | IESNA Tipo II Corto



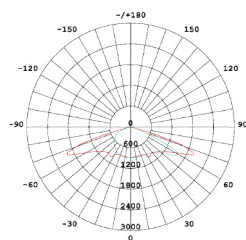
T2S3203 | IESNA Tipo II Corto



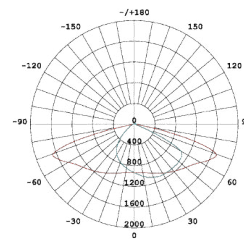
T2S3702 | IESNA Tipo II Corto



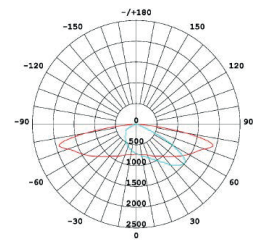
T3M1910 | IESNA Tipo III Medio



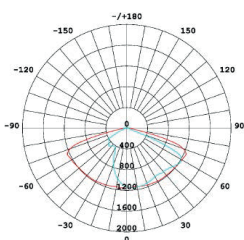
T3M1911 (Vertical) | IESNA Tipo III Medio



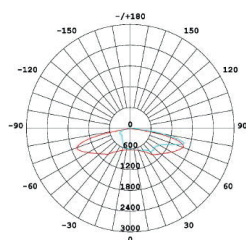
T3M2701 | IESNA Tipo III Medio



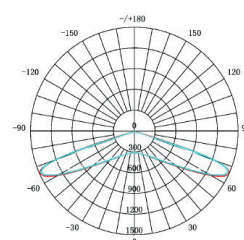
T3M3910 | IESNA Tipo III Medio



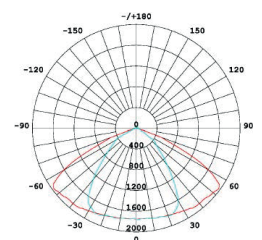
T3M3701 | IESNA Tipo III Medio



T4M5703 | IESNA Tipo IV Medio



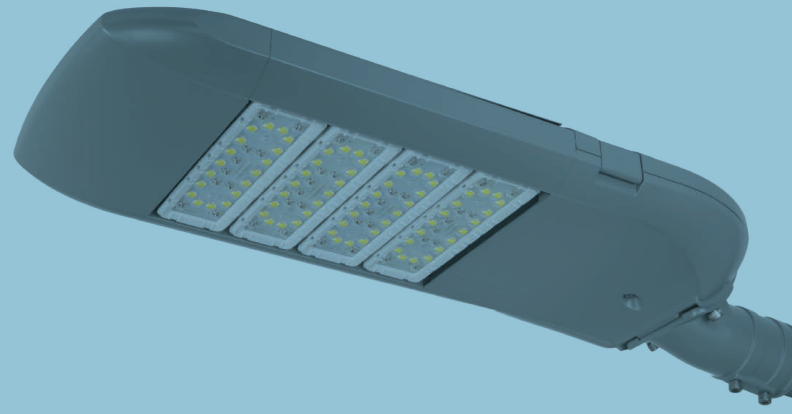
T5S3040 | IESNA Tipo VS



TL3010 | Para Túneles

MÓDULOS LED

M8B

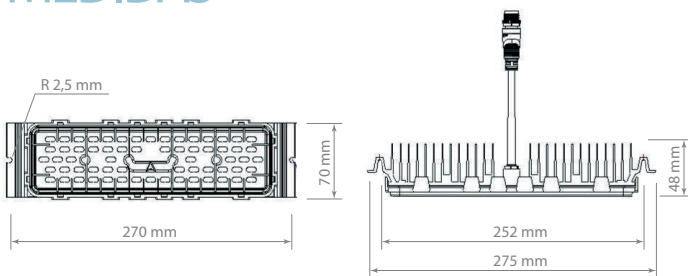


- Lumileds LUXEON LED de alta luminosidad.
- Grado de protección IP68.
- Larga Vida útil.
- Múltiples distribuciones de iluminación.

ESPECIFICACIONES TÉCNICAS

COLOR	POTENCIA	CORRIENTE	VOLTAJE	EFICIENCIA	F. LUMÍNICO	CRI	APERTURA
3000 K	60W	1050 mA	48-61 V	105 Lm/W	6300 Lm	≥ 70	Tipo II
4000 K							Tipo III
5000 K							Luz Túnel
							25°
							40°
							60°
							110°

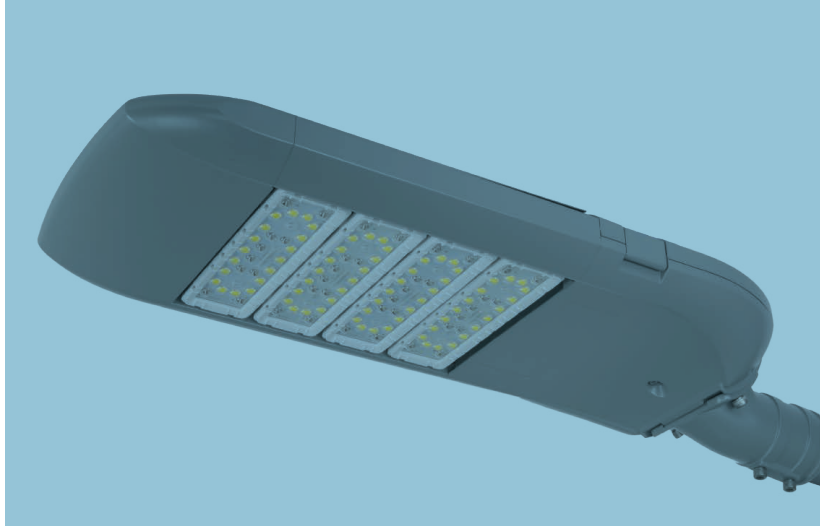
MEDIDAS



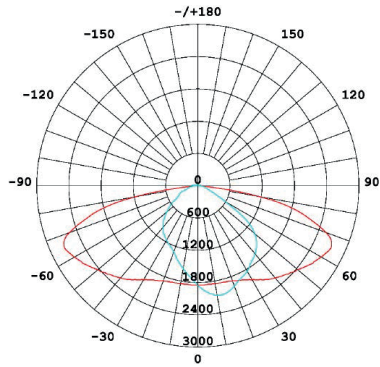
APLICACIONES

- Autopistas.
- Túneles
- Industrias.
- Plazas.
- Etc.

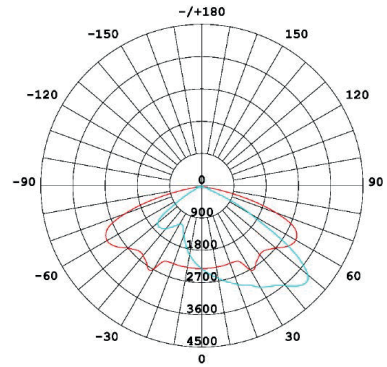




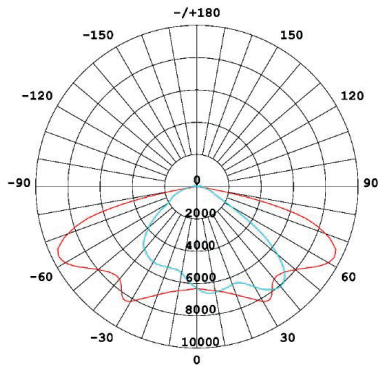
DISTRIBUCIÓN LUMÍNICA



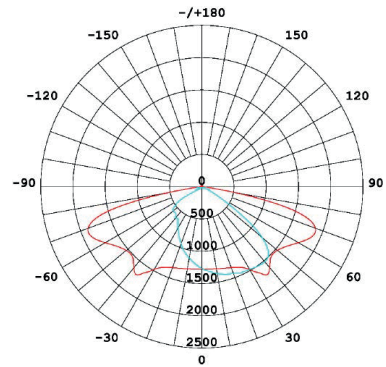
T2S2321 | IESNA Tipo II Corto



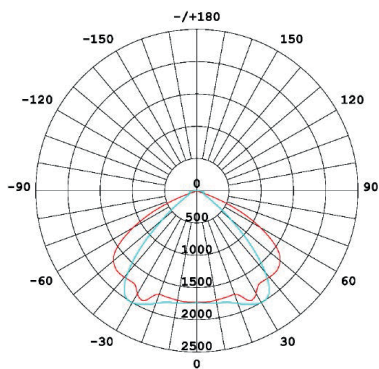
T2S1324 | IESNA Tipo II Corto



T2S2201 | IESNA Tipo II Corto



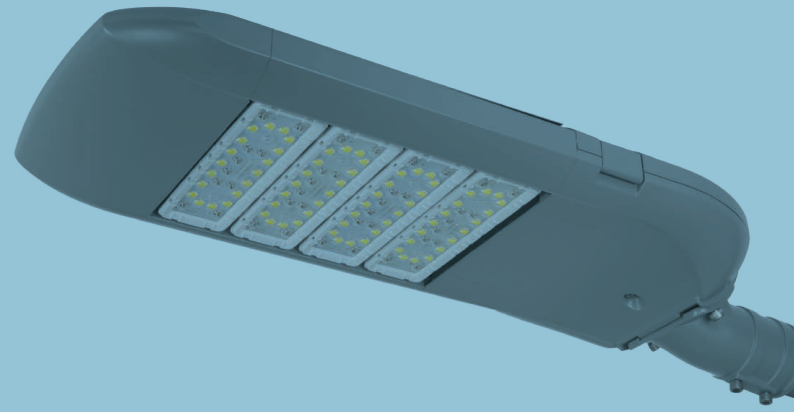
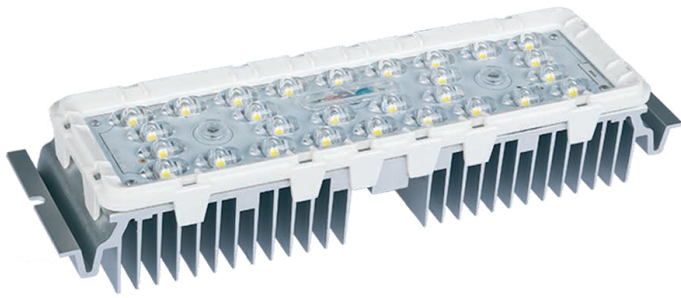
T3M1321 | IESNA Tipo III Medio



TL1390 | Apertura (50%) 120° x 100°

MÓDULOS LED

M16B

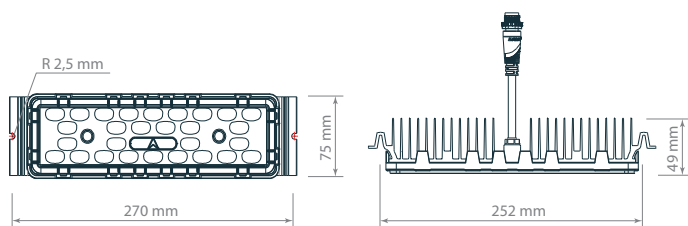


- Alta eficiencia de iluminación (bajo consumo de energía)
- Grado de protección IP68.
- Larga Vida útil.
- Múltiples distribuciones de iluminación.

ESPECIFICACIONES TÉCNICAS

COLOR	POTENCIA	CORRIENTE	VOLTAJE	EFICIENCIA	F. LUMÍNICO	CRI	APERTURA
3000 K	60W	1200 mA	42-54 V	145 Lm/W	9000 Lm	≥ 70	Tipo II Corto
4000 K							40°
5000 K							60°
							90°

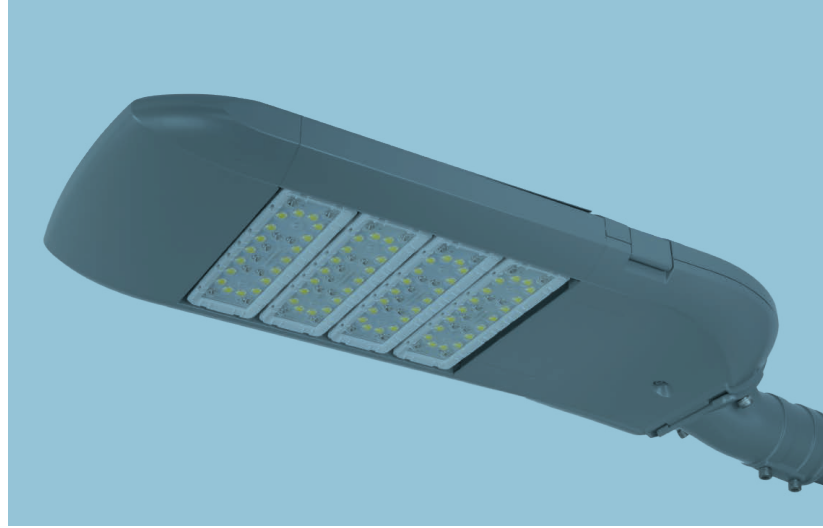
MEDIDAS



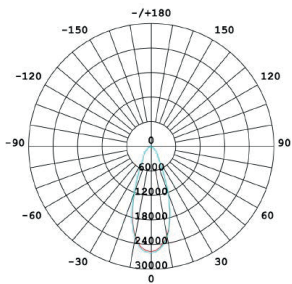
APLICACIONES

- Autopistas.
- Túneles
- Industrias.
- Plazas.
- Cartelería.
- Etc.

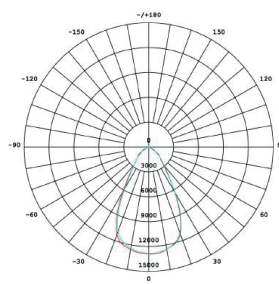




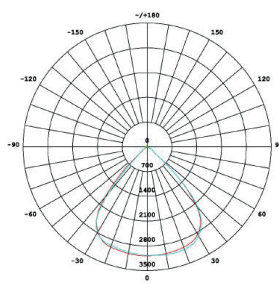
DISTRIBUCIÓN LUMÍNICA



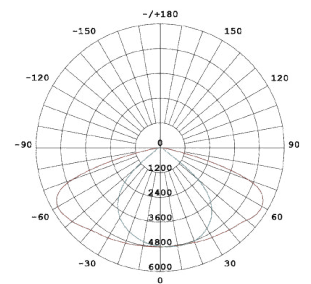
40D3140
Apertura (50%) 40°



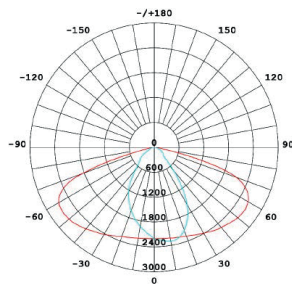
60D3160
Apertura (50%) 60°



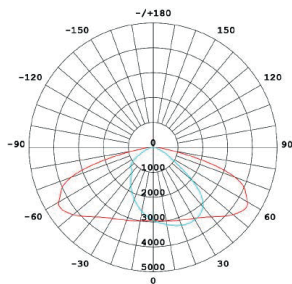
90D2190
Apertura (50%) 90°



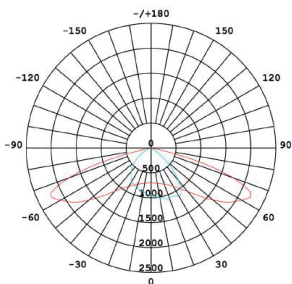
T2S2105
IESNA Tipo II Corto



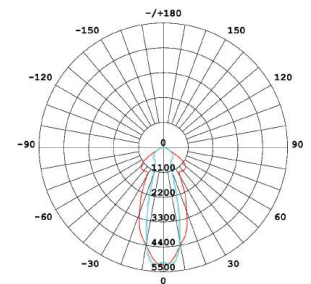
T2S3105
IESNA Tipo II Corto



T2S3106
IESNA Tipo II Corto



1107



Cartelerías

ESPECIFICACIONES TÉCNICAS DRIVER



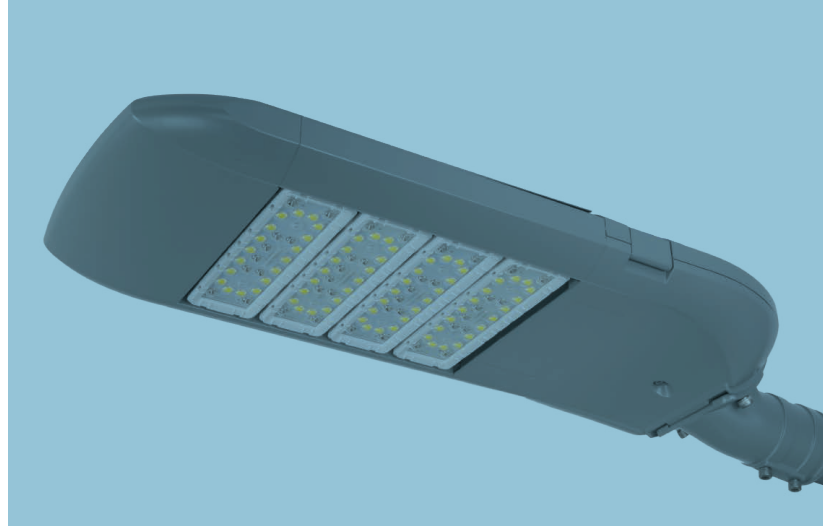
MOSO®

POTENCIA	MODELO MOSO	CORRIENTE	VOLTAJE	F. POTENCIA	TEMP. TRAB	THD	G. DE PROT.
60W	LDC-075R062	1050 mA	100-277V~ 50/60 Hz	0.98	-40° C ~ 60° C	≤ 15%	IP 67
120W	LDP-150R214	1050 mA					
180W	LDP-200R305	1050 mA					
240W	LDP-320R457	860 mA					
300W	LDP-320R457	1050 mA					



URU LAMP

Iluminación con Tecnología LED



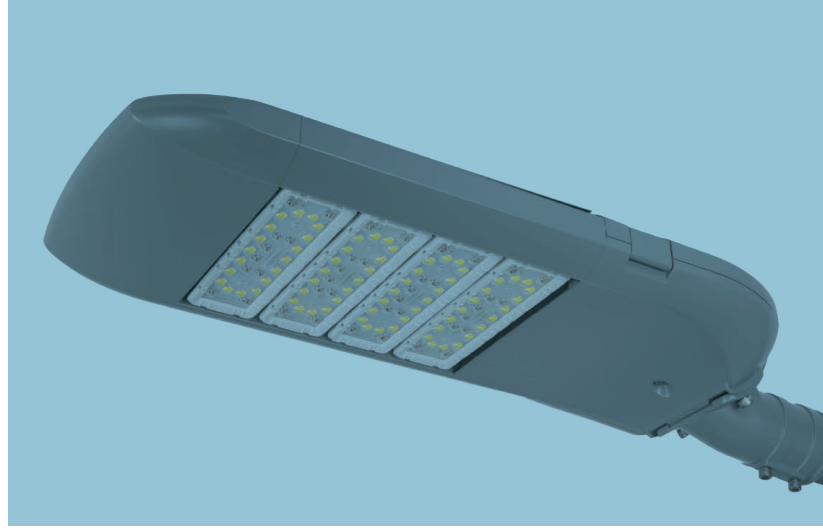
LISTA DE MODELOS 60W (T19E-1)

SERIE	COLOR	POT.	MÓD.	DRIVER	APERTURA	MODELO 3000 K	MODELO 4000 K	MODELO 5000 K
T19E-1	Gris	60W	M1A	LDC-075R062	T1S1501	UL-BM-73WN1011	UL-BM-73WN2011	UL-BM-73WN3011
T19E-1	Gris	60W	M1A	LDC-075R062	T1S1502 (Vertical)	UL-BM-73WN1021	UL-BM-73WN2021	UL-BM-73WN3021
T19E-1	Gris	60W	M1A	LDC-075R062	T1S1613	UL-BM-73WN1031	UL-BM-73WN2031	UL-BM-73WN3031
T19E-1	Gris	60W	M1A	LDC-075R062	T1S1810	UL-BM-73WN1041	UL-BM-73WN2041	UL-BM-73WN3041
T19E-1	Gris	60W	M1A	LDC-075R062	T1S1811	UL-BM-73WN1051	UL-BM-73WN2051	UL-BM-73WN3051
T19E-1	Gris	60W	M1A	LDC-075R062	T1S3501	UL-BM-73WN1061	UL-BM-73WN2061	UL-BM-73WN3061
T19E-1	Gris	60W	M1A	LDC-075R062	T1S3100	UL-BM-73WN1071	UL-BM-73WN2071	UL-BM-73WN3071
T19E-1	Gris	60W	M1A	LDC-075R062	T1S3101 (Vertical)	UL-BM-73WN1081	UL-BM-73WN2081	UL-BM-73WN3081
T19E-1	Gris	60W	M1A	LDC-075R062	T1S3201	UL-BM-73WN1091	UL-BM-73WN2091	UL-BM-73WN3091
T19E-1	Gris	60W	M1A	LDC-075R062	T2S1312	UL-BM-73WN1101	UL-BM-73WN2101	UL-BM-73WN3101
T19E-1	Gris	60W	M1A	LDC-075R062	T2S3203	UL-BM-73WN1111	UL-BM-73WN2111	UL-BM-73WN3111
T19E-1	Gris	60W	M1A	LDC-075R062	T2S3702	UL-BM-73WN1121	UL-BM-73WN2121	UL-BM-73WN3121
T19E-1	Gris	60W	M1A	LDC-075R062	T3M1910	UL-BM-73WN1131	UL-BM-73WN2131	UL-BM-73WN3131
T19E-1	Gris	60W	M1A	LDC-075R062	T3M1911 (Vertical)	UL-BM-73WN1141	UL-BM-73WN2141	UL-BM-73WN3141
T19E-1	Gris	60W	M1A	LDC-075R062	T3M2701	UL-BM-73WN1151	UL-BM-73WN2151	UL-BM-73WN3151
T19E-1	Gris	60W	M1A	LDC-075R062	T3M3910	UL-BM-73WN1161	UL-BM-73WN2161	UL-BM-73WN3161
T19E-1	Gris	60W	M1A	LDC-075R062	T3M3701	UL-BM-73WN1171	UL-BM-73WN2171	UL-BM-73WN3171
T19E-1	Gris	60W	M1A	LDC-075R062	T4M5703	UL-BM-73WN1181	UL-BM-73WN2181	UL-BM-73WN3181
T19E-1	Gris	60W	M1A	LDC-075R062	T5S3040	UL-BM-73WN1191	UL-BM-73WN2191	UL-BM-73WN3191
T19E-1	Gris	60W	M1A	LDC-075R062	TL3010	UL-BM-73WN1201	UL-BM-73WN2201	UL-BM-73WN3201
T19E-1	Gris	60W	M8B	LDC-075R062	T2S2321	UL-BM-73WN1251	UL-BM-73WN2251	UL-BM-73WN3251
T19E-1	Gris	60W	M8B	LDC-075R062	T2S1324	UL-BM-73WN1261	UL-BM-73WN2261	UL-BM-73WN3261
T19E-1	Gris	60W	M8B	LDC-075R062	T2S2201	UL-BM-73WN1271	UL-BM-73WN2271	UL-BM-73WN3271
T19E-1	Gris	60W	M8B	LDC-075R062	T3M1321	UL-BM-73WN1281	UL-BM-73WN2281	UL-BM-73WN3281
T19E-1	Gris	60W	M8B	LDC-075R062	TL1390	UL-BM-73WN1291	UL-BM-73WN2291	UL-BM-73WN3291
T19E-1	Gris	60W	M16B	LDC-075R062	T2S2105	UL-BM-73WN1301	UL-BM-73WN2301	UL-BM-73WN3301
T19E-1	Gris	60W	M16B	LDC-075R062	T2S3105	UL-BM-73WN1311	UL-BM-73WN2311	UL-BM-73WN3311
T19E-1	Gris	60W	M16B	LDC-075R062	T2S3106	UL-BM-73WN1321	UL-BM-73WN2321	UL-BM-73WN3321
T19E-1	Gris	60W	M16B	LDC-075R062	1107	UL-BM-73WN1331	UL-BM-73WN2331	UL-BM-73WN3331



URU LAMP

Iluminación con Tecnología LED



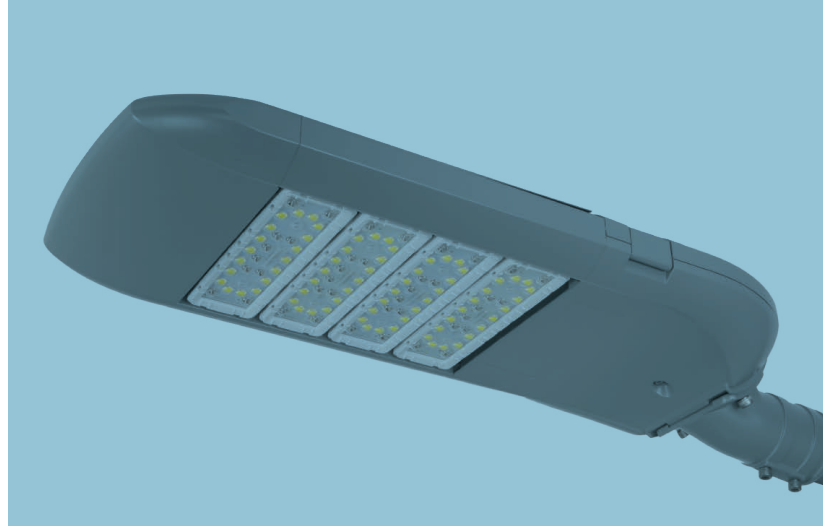
LISTA DE MODELOS 120W(T19E-2)

SERIE	COLOR	POT.	MÓD.	DRIVER	APERTURA	MODELO 3000 K	MODELO 4000 K	MODELO 5000 K
T19E-2	Gris	120W	M1A	LDP-150R214	T1S1501	UL-BM-133WN1011	UL-BM-133WN2011	UL-BM-133WN3011
T19E-2	Gris	120W	M1A	LDP-150R214	T1S1502 (Vertical)	UL-BM-133WN1021	UL-BM-133WN2021	UL-BM-133WN3021
T19E-2	Gris	120W	M1A	LDP-150R214	T1S1613	UL-BM-133WN1031	UL-BM-133WN2031	UL-BM-133WN3031
T19E-2	Gris	120W	M1A	LDP-150R214	T1S1810	UL-BM-133WN1041	UL-BM-133WN2041	UL-BM-133WN3041
T19E-2	Gris	120W	M1A	LDP-150R214	T1S1811	UL-BM-133WN1051	UL-BM-133WN2051	UL-BM-133WN3051
T19E-2	Gris	120W	M1A	LDP-150R214	T1S3501	UL-BM-133WN1061	UL-BM-133WN2061	UL-BM-133WN3061
T19E-2	Gris	120W	M1A	LDP-150R214	T1S3100	UL-BM-133WN1071	UL-BM-133WN2071	UL-BM-133WN3071
T19E-2	Gris	120W	M1A	LDP-150R214	T1S3101 (Vertical)	UL-BM-133WN1081	UL-BM-133WN2081	UL-BM-133WN3081
T19E-2	Gris	120W	M1A	LDP-150R214	T1S3201	UL-BM-133WN1091	UL-BM-133WN2091	UL-BM-133WN3091
T19E-2	Gris	120W	M1A	LDP-150R214	T2S1312	UL-BM-133WN1101	UL-BM-133WN2101	UL-BM-133WN3101
T19E-2	Gris	120W	M1A	LDP-150R214	T2S3203	UL-BM-133WN1111	UL-BM-133WN2111	UL-BM-133WN3111
T19E-2	Gris	120W	M1A	LDP-150R214	T2S3702	UL-BM-133WN1121	UL-BM-133WN2121	UL-BM-133WN3121
T19E-2	Gris	120W	M1A	LDP-150R214	T3M1910	UL-BM-133WN1131	UL-BM-133WN2131	UL-BM-133WN3131
T19E-2	Gris	120W	M1A	LDP-150R214	T3M1911 (Vertical)	UL-BM-133WN1141	UL-BM-133WN2141	UL-BM-133WN3141
T19E-2	Gris	120W	M1A	LDP-150R214	T3M2701	UL-BM-133WN1151	UL-BM-133WN2151	UL-BM-133WN3151
T19E-2	Gris	120W	M1A	LDP-150R214	T3M3910	UL-BM-133WN1161	UL-BM-133WN2161	UL-BM-133WN3161
T19E-2	Gris	120W	M1A	LDP-150R214	T3M3701	UL-BM-133WN1171	UL-BM-133WN2171	UL-BM-133WN3171
T19E-2	Gris	120W	M1A	LDP-150R214	T4M5703	UL-BM-133WN1181	UL-BM-133WN2181	UL-BM-133WN3181
T19E-2	Gris	120W	M1A	LDP-150R214	T5S3040	UL-BM-133WN1191	UL-BM-133WN2191	UL-BM-133WN3191
T19E-2	Gris	120W	M1A	LDP-150R214	TL3010	UL-BM-133WN1201	UL-BM-133WN2201	UL-BM-133WN3201
T19E-2	Gris	120W	M8B	LDP-150R214	T2S2321	UL-BM-133WN1251	UL-BM-133WN2251	UL-BM-133WN3251
T19E-2	Gris	120W	M8B	LDP-150R214	T2S1324	UL-BM-133WN1261	UL-BM-133WN2261	UL-BM-133WN3261
T19E-2	Gris	120W	M8B	LDP-150R214	T2S2201	UL-BM-133WN1271	UL-BM-133WN2271	UL-BM-133WN3271
T19E-2	Gris	120W	M8B	LDP-150R214	T3M1321	UL-BM-133WN1281	UL-BM-133WN2281	UL-BM-133WN3281
T19E-2	Gris	120W	M8B	LDP-150R214	TL1390	UL-BM-133WN1291	UL-BM-133WN2291	UL-BM-133WN3291
T19E-2	Gris	120W	M16B	LDP-150R214	T2S2105	UL-BM-133WN1301	UL-BM-133WN2301	UL-BM-133WN3301
T19E-2	Gris	120W	M16B	LDP-150R214	T2S3105	UL-BM-133WN1311	UL-BM-133WN2311	UL-BM-133WN3311
T19E-2	Gris	120W	M16B	LDP-150R214	T2S3106	UL-BM-133WN1321	UL-BM-133WN2321	UL-BM-133WN3321
T19E-2	Gris	120W	M16B	LDP-150R214	1107	UL-BM-133WN1331	UL-BM-133WN2331	UL-BM-133WN3331



URULAMP

Iluminación con Tecnología LED



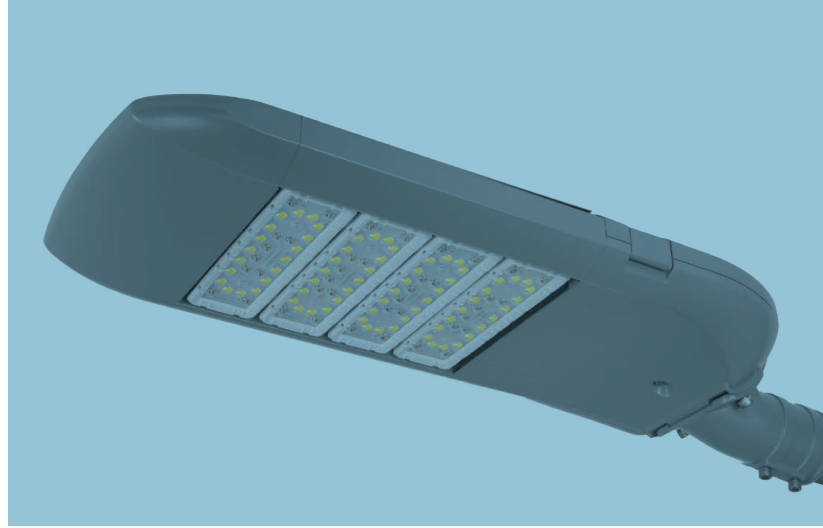
LISTA DE MODELOS 180W(T19E-3)

SERIE	COLOR	POT.	MÓD.	DRIVER	APERTURA	MODELO 3000 K	MODELO 4000 K	MODELO 5000 K
T19E-3	Gris	180W	M1A	LDP-200R305	T1S1501	UL-BM-193WN1011	UL-BM-193WN2011	UL-BM-193WN3011
T19E-3	Gris	180W	M1A	LDP-200R305	T1S1502 (Vertical)	UL-BM-193WN1021	UL-BM-193WN2021	UL-BM-193WN3021
T19E-3	Gris	180W	M1A	LDP-200R305	T1S1613	UL-BM-193WN1031	UL-BM-193WN2031	UL-BM-193WN3031
T19E-3	Gris	180W	M1A	LDP-200R305	T1S1810	UL-BM-193WN1041	UL-BM-193WN2041	UL-BM-193WN3041
T19E-3	Gris	180W	M1A	LDP-200R305	T1S1811	UL-BM-193WN1051	UL-BM-193WN2051	UL-BM-193WN3051
T19E-3	Gris	180W	M1A	LDP-200R305	T1S3501	UL-BM-193WN1061	UL-BM-193WN2061	UL-BM-193WN3061
T19E-3	Gris	180W	M1A	LDP-200R305	T1S3100	UL-BM-193WN1071	UL-BM-193WN2071	UL-BM-193WN3071
T19E-3	Gris	180W	M1A	LDP-200R305	T1S3101 (Vertical)	UL-BM-193WN1081	UL-BM-193WN2081	UL-BM-193WN3081
T19E-3	Gris	180W	M1A	LDP-200R305	T1S3201	UL-BM-193WN1091	UL-BM-193WN2091	UL-BM-193WN3091
T19E-3	Gris	180W	M1A	LDP-200R305	T2S1312	UL-BM-193WN1101	UL-BM-193WN2101	UL-BM-193WN3101
T19E-3	Gris	180W	M1A	LDP-200R305	T2S3203	UL-BM-193WN1111	UL-BM-193WN2111	UL-BM-193WN3111
T19E-3	Gris	180W	M1A	LDP-200R305	T2S3702	UL-BM-193WN1121	UL-BM-193WN2121	UL-BM-193WN3121
T19E-3	Gris	180W	M1A	LDP-200R305	T3M1910	UL-BM-193WN1131	UL-BM-193WN2131	UL-BM-193WN3131
T19E-3	Gris	180W	M1A	LDP-200R305	T3M1911 (Vertical)	UL-BM-193WN1141	UL-BM-193WN2141	UL-BM-193WN3141
T19E-3	Gris	180W	M1A	LDP-200R305	T3M2701	UL-BM-193WN1151	UL-BM-193WN2151	UL-BM-193WN3151
T19E-3	Gris	180W	M1A	LDP-200R305	T3M3910	UL-BM-193WN1161	UL-BM-193WN2161	UL-BM-193WN3161
T19E-3	Gris	180W	M1A	LDP-200R305	T3M3701	UL-BM-193WN1171	UL-BM-193WN2171	UL-BM-193WN3171
T19E-3	Gris	180W	M1A	LDP-200R305	T4M5703	UL-BM-193WN1181	UL-BM-193WN2181	UL-BM-193WN3181
T19E-3	Gris	180W	M1A	LDP-200R305	T5S3040	UL-BM-193WN1191	UL-BM-193WN2191	UL-BM-193WN3191
T19E-3	Gris	180W	M1A	LDP-200R305	TL3010	UL-BM-193WN1201	UL-BM-193WN2201	UL-BM-193WN3201
T19E-3	Gris	180W	M8B	LDP-200R305	T2S2321	UL-BM-193WN1251	UL-BM-193WN2251	UL-BM-193WN3251
T19E-3	Gris	180W	M8B	LDP-200R305	T2S1324	UL-BM-193WN1261	UL-BM-193WN2261	UL-BM-193WN3261
T19E-3	Gris	180W	M8B	LDP-200R305	T2S2201	UL-BM-193WN1271	UL-BM-193WN2271	UL-BM-193WN3271
T19E-3	Gris	180W	M8B	LDP-200R305	T3M1321	UL-BM-193WN1281	UL-BM-193WN2281	UL-BM-193WN3281
T19E-3	Gris	180W	M8B	LDP-200R305	TL1390	UL-BM-193WN1291	UL-BM-193WN2291	UL-BM-193WN3291
T19E-3	Gris	180W	M16B	LDP-200R305	T2S2105	UL-BM-193WN1301	UL-BM-193WN2301	UL-BM-193WN3301
T19E-3	Gris	180W	M16B	LDP-200R305	T2S3105	UL-BM-193WN1311	UL-BM-193WN2311	UL-BM-193WN3311
T19E-3	Gris	180W	M16B	LDP-200R305	T2S3106	UL-BM-193WN1321	UL-BM-193WN2321	UL-BM-193WN3321
T19E-3	Gris	180W	M16B	LDP-200R305	1107	UL-BM-193WN1331	UL-BM-193WN2331	UL-BM-193WN3331



URU LAMP

Iluminación con Tecnología LED



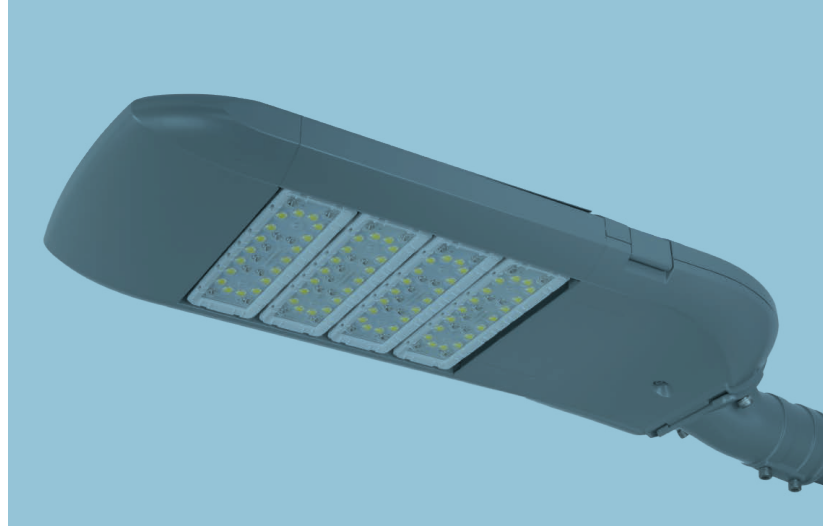
LISTA DE MODELOS 240W(T19E-4)

SERIE	COLOR	POT.	MÓD.	DRIVER	APERTURA	MODELO 3000 K	MODELO 4000 K	MODELO 5000 K
T19E-4	Gris	240W	M1A	LDP-320R457	T1S1501	UL-BM-253WN1011	UL-BM-253WN2011	UL-BM-253WN3011
T19E-4	Gris	240W	M1A	LDP-320R457	T1S1502 (Vertical)	UL-BM-253WN1021	UL-BM-253WN2021	UL-BM-253WN3021
T19E-4	Gris	240W	M1A	LDP-320R457	T1S1613	UL-BM-253WN1031	UL-BM-253WN2031	UL-BM-253WN3031
T19E-4	Gris	240W	M1A	LDP-320R457	T1S1810	UL-BM-253WN1041	UL-BM-253WN2041	UL-BM-253WN3041
T19E-4	Gris	240W	M1A	LDP-320R457	T1S1811	UL-BM-253WN1051	UL-BM-253WN2051	UL-BM-253WN3051
T19E-4	Gris	240W	M1A	LDP-320R457	T1S3501	UL-BM-253WN1061	UL-BM-253WN2061	UL-BM-253WN3061
T19E-4	Gris	240W	M1A	LDP-320R457	T1S3100	UL-BM-253WN1071	UL-BM-253WN2071	UL-BM-253WN3071
T19E-4	Gris	240W	M1A	LDP-320R457	T1S3101 (Vertical)	UL-BM-253WN1081	UL-BM-253WN2081	UL-BM-253WN3081
T19E-4	Gris	240W	M1A	LDP-320R457	T1S3201	UL-BM-253WN1091	UL-BM-253WN2091	UL-BM-253WN3091
T19E-4	Gris	240W	M1A	LDP-320R457	T2S1312	UL-BM-253WN1101	UL-BM-253WN2101	UL-BM-253WN3101
T19E-4	Gris	240W	M1A	LDP-320R457	T2S3203	UL-BM-253WN1111	UL-BM-253WN2111	UL-BM-253WN3111
T19E-4	Gris	240W	M1A	LDP-320R457	T2S3702	UL-BM-253WN1121	UL-BM-253WN2121	UL-BM-253WN3121
T19E-4	Gris	240W	M1A	LDP-320R457	T3M1910	UL-BM-253WN1131	UL-BM-253WN2131	UL-BM-253WN3131
T19E-4	Gris	240W	M1A	LDP-320R457	T3M1911 (Vertical)	UL-BM-253WN1141	UL-BM-253WN2141	UL-BM-253WN3141
T19E-4	Gris	240W	M1A	LDP-320R457	T3M2701	UL-BM-253WN1151	UL-BM-253WN2151	UL-BM-253WN3151
T19E-4	Gris	240W	M1A	LDP-320R457	T3M3910	UL-BM-253WN1161	UL-BM-253WN2161	UL-BM-253WN3161
T19E-4	Gris	240W	M1A	LDP-320R457	T3M3701	UL-BM-253WN1171	UL-BM-253WN2171	UL-BM-253WN3171
T19E-4	Gris	240W	M1A	LDP-320R457	T4M5703	UL-BM-253WN1181	UL-BM-253WN2181	UL-BM-253WN3181
T19E-4	Gris	240W	M1A	LDP-320R457	T5S3040	UL-BM-253WN1191	UL-BM-253WN2191	UL-BM-253WN3191
T19E-4	Gris	240W	M1A	LDP-320R457	TL3010	UL-BM-253WN1201	UL-BM-253WN2201	UL-BM-253WN3201
T19E-4	Gris	240W	M8B	LDP-320R457	T2S2321	UL-BM-253WN1251	UL-BM-253WN2251	UL-BM-253WN3251
T19E-4	Gris	240W	M8B	LDP-320R457	T2S1324	UL-BM-253WN1261	UL-BM-253WN2261	UL-BM-253WN3261
T19E-4	Gris	240W	M8B	LDP-320R457	T2S2201	UL-BM-253WN1271	UL-BM-253WN2271	UL-BM-253WN3271
T19E-4	Gris	240W	M8B	LDP-320R457	T3M1321	UL-BM-253WN1281	UL-BM-253WN2281	UL-BM-253WN3281
T19E-4	Gris	240W	M8B	LDP-320R457	TL1390	UL-BM-253WN1291	UL-BM-253WN2291	UL-BM-253WN3291
T19E-4	Gris	240W	M16B	LDP-320R457	T2S2105	UL-BM-253WN1301	UL-BM-253WN2301	UL-BM-253WN3301
T19E-4	Gris	240W	M16B	LDP-320R457	T2S3105	UL-BM-253WN1311	UL-BM-253WN2311	UL-BM-253WN3311
T19E-4	Gris	240W	M16B	LDP-320R457	T2S3106	UL-BM-253WN1321	UL-BM-253WN2321	UL-BM-253WN3321
T19E-4	Gris	240W	M16B	LDP-320R457	1107	UL-BM-253WN1331	UL-BM-253WN2331	UL-BM-253WN3331



URU LAMP

Iluminación con Tecnología LED



LISTA DE MODELOS 300W(T19E-5)

SERIE	COLOR	POT.	MÓD.	DRIVER	APERTURA	MODELO 3000 K	MODELO 4000 K	MODELO 5000 K
T19E-5	Gris	300W	M1A	LDP-320R457	T1S1501	UL-BM-313WN1011	UL-BM-313WN2011	UL-BM-313WN3011
T19E-5	Gris	300W	M1A	LDP-320R457	T1S1502 (Vertical)	UL-BM-313WN1021	UL-BM-313WN2021	UL-BM-313WN3021
T19E-5	Gris	300W	M1A	LDP-320R457	T1S1613	UL-BM-313WN1031	UL-BM-313WN2031	UL-BM-313WN3031
T19E-5	Gris	300W	M1A	LDP-320R457	T1S1810	UL-BM-313WN1041	UL-BM-313WN2041	UL-BM-313WN3041
T19E-5	Gris	300W	M1A	LDP-320R457	T1S1811	UL-BM-313WN1051	UL-BM-313WN2051	UL-BM-313WN3051
T19E-5	Gris	300W	M1A	LDP-320R457	T1S3501	UL-BM-313WN1061	UL-BM-313WN2061	UL-BM-313WN3061
T19E-5	Gris	300W	M1A	LDP-320R457	T1S3100	UL-BM-313WN1071	UL-BM-313WN2071	UL-BM-313WN3071
T19E-5	Gris	300W	M1A	LDP-320R457	T1S3101 (Vertical)	UL-BM-313WN1081	UL-BM-313WN2081	UL-BM-313WN3081
T19E-5	Gris	300W	M1A	LDP-320R457	T1S3201	UL-BM-313WN1091	UL-BM-313WN2091	UL-BM-313WN3091
T19E-5	Gris	300W	M1A	LDP-320R457	T2S1312	UL-BM-313WN1101	UL-BM-313WN2101	UL-BM-313WN3101
T19E-5	Gris	300W	M1A	LDP-320R457	T2S3203	UL-BM-313WN1111	UL-BM-313WN2111	UL-BM-313WN3111
T19E-5	Gris	300W	M1A	LDP-320R457	T2S3702	UL-BM-313WN1121	UL-BM-313WN2121	UL-BM-313WN3121
T19E-5	Gris	300W	M1A	LDP-320R457	T3M1910	UL-BM-313WN1131	UL-BM-313WN2131	UL-BM-313WN3131
T19E-5	Gris	300W	M1A	LDP-320R457	T3M1911 (Vertical)	UL-BM-313WN1141	UL-BM-313WN2141	UL-BM-313WN3141
T19E-5	Gris	300W	M1A	LDP-320R457	T3M2701	UL-BM-313WN1151	UL-BM-313WN2151	UL-BM-313WN3151
T19E-5	Gris	300W	M1A	LDP-320R457	T3M3910	UL-BM-313WN1161	UL-BM-313WN2161	UL-BM-313WN3161
T19E-5	Gris	300W	M1A	LDP-320R457	T3M3701	UL-BM-313WN1171	UL-BM-313WN2171	UL-BM-313WN3171
T19E-5	Gris	300W	M1A	LDP-320R457	T4M5703	UL-BM-313WN1181	UL-BM-313WN2181	UL-BM-313WN3181
T19E-5	Gris	300W	M1A	LDP-320R457	T5S3040	UL-BM-313WN1191	UL-BM-313WN2191	UL-BM-313WN3191
T19E-5	Gris	300W	M1A	LDP-320R457	TL3010	UL-BM-313WN1201	UL-BM-313WN2201	UL-BM-313WN3201
T19E-5	Gris	300W	M8B	LDP-320R457	T2S2321	UL-BM-313WN1251	UL-BM-313WN2251	UL-BM-313WN3251
T19E-5	Gris	300W	M8B	LDP-320R457	T2S1324	UL-BM-313WN1261	UL-BM-313WN2261	UL-BM-313WN3261
T19E-5	Gris	300W	M8B	LDP-320R457	T2S2201	UL-BM-313WN1271	UL-BM-313WN2271	UL-BM-313WN3271
T19E-5	Gris	300W	M8B	LDP-320R457	T3M1321	UL-BM-313WN1281	UL-BM-313WN2281	UL-BM-313WN3281
T19E-5	Gris	300W	M8B	LDP-320R457	TL1390	UL-BM-313WN1291	UL-BM-313WN2291	UL-BM-313WN3291
T19E-5	Gris	300W	M16B	LDP-320R457	T2S2105	UL-BM-313WN1301	UL-BM-313WN2301	UL-BM-313WN3301
T19E-5	Gris	300W	M16B	LDP-320R457	T2S3105	UL-BM-313WN1311	UL-BM-313WN2311	UL-BM-313WN3311
T19E-5	Gris	300W	M16B	LDP-320R457	T2S3106	UL-BM-313WN1321	UL-BM-313WN2321	UL-BM-313WN3321
T19E-5	Gris	300W	M16B	LDP-320R457	1107	UL-BM-313WN1331	UL-BM-313WN2331	UL-BM-313WN3331